

VENDOR & IN-KIND DONATION OPPORTUNITIES

Become an Event Vendor \$200

Set up a branded presence at one of our spring events. This is a powerful opportunity to connect directly with our wellness-focused community while supporting a meaningful cause.

Donate In-Kind Products & Services

Do you offer wellness, self-care, or lifestyle products or services? Donate items and/or gift cards to be included directly in our WeCare Wellness Boxes or used as event giveaways. Your products/services reach nurses and healthcare workers across Minnesota.

DIRECT CONTRIBUTION OPPORTUNITIES

\$29

Sends 1 WeCare Wellness Box to nurses during nurses week at North Memorial Hospital, MN

\$58

Sends 2 WeCare Wellness Boxes to nurses during nurses week at North Memorial Hospital, MN

\$145

Sponsors 5 WeCare Wellness Boxes to nurses during nurses week at North Memorial Hospital, MN

SPONSORSHIP OPPORTUNITIES

 [Click here: Sponsorship & Partnership Opportunities - Sign Up Online](#)

NURSE CHAMPION \$100

- Social media recognition 1+ story (2.2k followers)
- Recognition on event website page
- Recognition in event emails (2k recipients)
- Company listing on WeCare Spring Fundraiser webpage

★ HEALTHCARE COMMUNITY HERO \$1000

Sponsor the entire Spring Initiative— our highest-impact partnership.

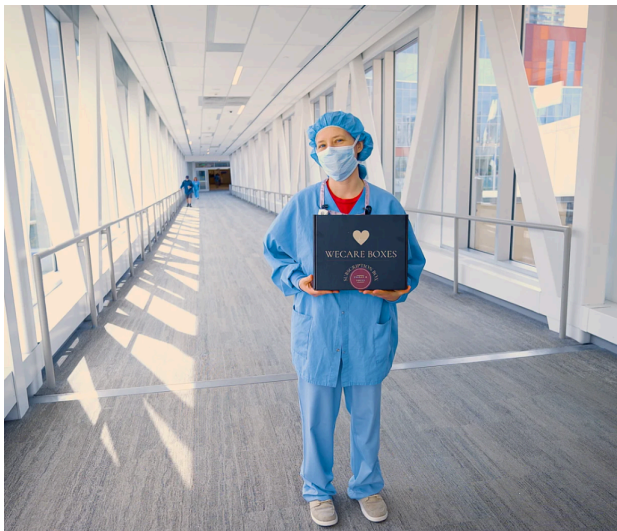
- Everything in Nurse Champion tier
- "Presented by [Company]" branding across 2 spring events
- 5 minute speaking or recognition moment at one event
- Collaboration social media post (2.2k followers)
- First right of refusal for future WeCare campaigns (2 fall events upcoming)

 [Click here: Sponsorship & Partnership Opportunities - Sign Up Online](#)

BENEFITS AT A GLANCE

Benefit	Nurse Champion \$100	Vendor/Donor \$200	Healthcare Community Hero \$1,000
WeCare Spring webpage listing	✓	✓	✓
Social media shoutout	1 story	2 stories	1 collab post + 2 stories
Announcement recognition	—	—	✓
Event signage logo placement	✓	✓	✓
Recognition in event emails	✓	✓	✓
"Presented by" branding	—	—	✓
Speaking moment at event	—	—	✓
First right of refusal for future WeCare campaigns	—	—	✓

[Click here: Sponsorship & Partnership Opportunities - Sign Up Online](#)



The Frontline is Falling

> 50% of healthcare professionals having reported experiencing burnout

Insomnia, depression, anxiety, PTSD, diabetes, and extreme fatigue.

*(Mayo Clinic-Stanford AMA Well-Being Index survey, 2023)
July 2022*

Donate

Connect to Give Back

We'd love to connect and find the right fit for your company. Reach out to our team to discuss sponsorship packages, vendor opportunities, or custom arrangements.

contact@wecarenonprofitfoundation.org